

AROCS 4143 8X4/4



Zoomlion Heavy Industry Science & Technology Co. Ltd.

Mercedes-Benz
Trucks you can trust



Orderdata (Order 1421701291)

A1D	Front axle 8.0 t	L2H	Side marker lamps, flashing
A1Y	Front axle, straight version	L4Z	Protective grille, metal, for headlamps
A2G	Rear axle, crown wheel 300, planetary, 13.4 t	L9A	Pre-installation for rotating beacons
A6A	Axle ratio i = 4.571	L9G	Pre-installation for flood lamp, cab rear wall
B1B	Electronic braking system with ABS and ASR	M0C	Bottom shell to prevent swirling-up of dust
B1F	Heating, electronic air-processing unit	M0Q	Noise regulation acc. to UN-R 51.03, phase 2
B1H	Electr. compressed air supply and control, centre	M2R	Eng. OM470, inline 6, 10.7 l, 315kW (428hp), 2100 Nm
B1Z	ABS, disengageable	M4X	Engine version Euro VI, E
B2A	Disc brakes on front and rear axle	M5A	2. Engine generation OM470
B2D	Cover plate for brake discs	M5V	High Performance Engine Brake
B2X	Parking brake, electronic	M6L	Air compressor, 2-cylinder
B4A	Condensation monitoring, for compressed air sys.	M7I	Insect screen in front of cooling system
B4M	Air reservoir, steel	M7J	Guard plate, bumper
CLW	Steering oil cooling	M7T	Water pump, governed
C0L	Frame overhang 1300 mm	M8A	Air intake from front
C2O	Wheelbase 4550 mm	M8L	Cyclone filter for coarse dust
C5P	Bolted frame	N6E	Coupling, flexible, for engine PTO (loose)
C6H	Steering, Servotwin, 4-axle and 9t FA, air	N6P	Prov. for PTO, via external transfer case
C6J	Power steering pump, uncontrolled	N6Z	Transmission oil cooling
C6Q	Stabiliser, front axle	N7I	Engine takeoff, rear, b, flange 100 mm, 650 Nm
C6Y	Stabiliser, under frame, rear axle	OWY	Interior measures upgrade
C7A	Rear underride guard (ECE)	O0A	Coolant service interval, long for non-SWR
C7K	Battery carrier, batteries stacked	O0T	TruckLive
C8F	Wing, for chassis transit	O1N	Detachable parts for offline cab
C9S	Deletion mounting parts, on frame	O1T	Interior colour greige/anthracite
D0L	Smokers pack	O1Z	Steering, indirect
D0S	Compressed-air connection, in cab	O2F	PTO, NMV or engine, rear
D1B	Driver's suspension seat, standard	O2M	GU vehicle without registration restriction
D1N	Fold-up co-driver's seat	O2N	Starter Melco 95P65
D2Y	Seat belt monitor	O2X	Optimised cab separation point, supply
D3X	Seat cover, flat-weave fabric	O3K	Active Safety
D5Y	Rubber mats, driver's and co-driver's side	O6U	Ctrl. code, ident. plate Europ. type approv. stage2
D6F	Air conditioning system	P0Q	Cover, for wheel arch and engine
D6I	Residual engine heat utilisation	Q1X	Front spring, 2 x 8,0 t, 3-leaf
D6Z	Construction-site filter	Q3A	Rear spring, 2 x 13.0 t
D7G	Stowage compartment lid, driver and co-driver side	Q8D	Tow-away coupling, rear, Ringfeder
D8A	Roof hatch/vent, roof	R0Z	Wheel-nut cap
E0D	Battery sensor, Hella	R1Q	15-degree tapered rims, 9.00 x 22.5
E0F	Batteries from company Exide	S1H	Lane Keeping Assist
E1B	Batteries 2 x 12 V/170 Ah, low-maintenance	S1L	Attention Assist
E1N	Alternator 28 V/100 A	S1O	Traffic Sign Assist
E3L	Socket, 24 V/15 A, co-driver footwell	S1Y	Tyre pressure monitor
E3W	PSM, 2nd generation	S2D	Active Brake Assist 6
E4B	Interface, fleet management system FMS	S2H	Active Sideguard Assist 2
E4C	Additional functions, for body manufacturer	S2L	Frontguard Assist
E5A	No. 1 switch, for non-MB body electrics	S4A	Pre-installation for alcohol test on start-up lock

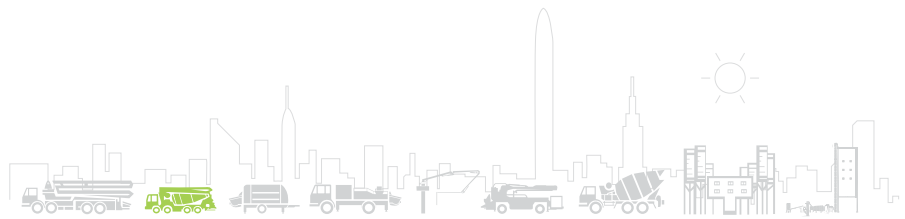
Orderdata (Order 1421701291)

E5H	Switch for night-time driving light	S5A	Speed limiter, 90 km/h (56 mph), ECE
E6Z	Reversing buzzer	S5Z	Cruise control
F0E	M-cab, low roof, 2.30 m, tunnel 320 mm	S8A	First aid kit
F0G	Side module, N3G vehicle	S8C	Hazard warning triangle
F0Y	Mirror cover, construction vehicle	S8D	Warning lamp
F1Q	M-cab	S8E	Reflective safety jacket
F2C	Floor variant, tunnel 320 mm	U0Q	Control code, HDEP Fuel Efficiency Package - FE1
F2G	Cab width 2.30 m	U1W	AdBlue lines, water-heated
F2M	Cab, 420 mm attachment height	U2G	Exhaust box
F2Y	ClassicSpace Low Roof	U2M	Control code, ASAM
F3A	Cab mountings, standard, steel-sprung	U2T	Control code, exhaust box, rear outlet
F3W	Cab tilting mechanism, mechanical-hydraulic	U2U	Control code, catalytic converter kit 1
F4H	Cab rear wall, without window	U3D	Control code, CAN star points, classic
F4X	Stowage compartment exterior flap, left	U3F	Control code, global AdBlue sensor (GMS DEF)
F5L	Sun visor, exterior, transparent	U3S	3rd-generation electronics architecture
F5Y	A-pillar trim	U3W	ICUC hardware Gen6.
F6D	Windscreen, tinted, with filter band	V0Q	Vehicle version in acc. w. GSR, phase B
F6I	Front mirror, heated	V0T	Vehicle class N3G, off-road vehicle
F7B	Bumper, with steel corners	V0W	Breakover angle, minimum 25 degrees
F7D	Bumper centre section w. towing eyes, coupling	V0X jaw	Ground clearance under front axle, minimum 250 mm
F7Y	Cab entrance, left/right, movable	V0Y	Ground clearance under rear axle, minimum 250 mm
F8B	2 remote control keys	V0Z	Ground clearance between axles, minimum 300 mm
F8E	Locking system, with central locking	V1B	Arocs
F8F	Extended central locking	V1Z	Grounder
F8W	Rain sensor	V2J	Arocs model generation 5
G0R	Transmission support arms, optimised for removal	V7L	Body type: concrete mixer
G0T	Predictive Powertrain Control	V8A	Chassis number FIN
G0W	Drive program offroad	V9G	Technical changes model year October
G2D	Transmission G 280-16/11.7-0.69	W7Y	Weight variant 41.0 t (8.0/8.0/13.0/13.0)
G5B	Double-disc clutch	X2A	Model identification, acc. to weight variant
G5G	Mercedes PowerShift 3	X2E	Model plate, EU
G5L	PowerShift Advanced	X2T	Maintenance Documentation
G5Y	Tachograph calibration, digital, ex factory	X2Y	Registration certificate, Part II, prepared
I2G	Tyres tubeless, 315/80 R 22.5, fr./lead./trl. axle	X3O	Mercedes-Benz OnRoadService
I2H	Tyres, tubeless, size 315/80 R 22.5, rear axle	X3Z	Powertrain warranty as per T and Cs 3yrs/250,000km
I4L	Wheel arrangement 8x4/4	X4H	Instrument/labels/documentation, German
I5J	41.0-tonner	X4S	ATS warranty according to GTC, 4th year/340,000 km
I6A	Rigid chassis	Y1B	Control of colours, high-runner colours
I6I	Vehicle production plant Wörth	Y1H	Assignment of cab paintwork, NFL North
I6K	Heavy-duty model series, new generation from 18 t	Y4H	Holder for wheel chock
I6M	Heavy-duty vehicles from 18 t, off-road	Y4J	2 wheel chocks
I6W	Leaf suspension, rear axle	Y4Y	Tyre inflating hose

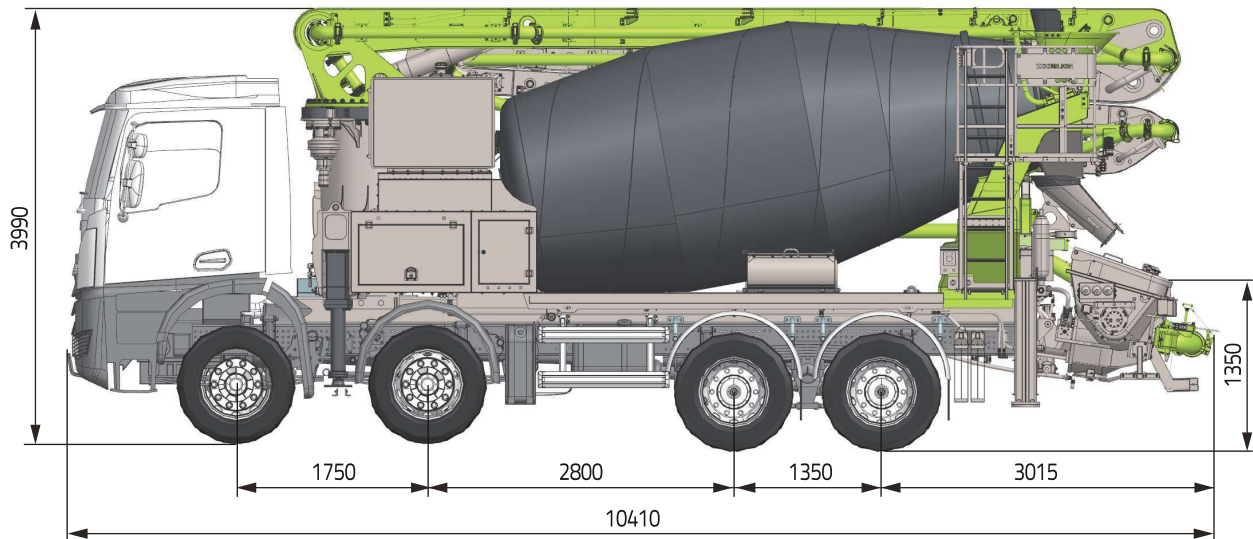
Orderdata (Order 1421701291)

J0U	Remote update of driving assistance map	Y4Z	Compressed-air gun, with hose
J1H	Instrument cluster, 12.7 cm	Z1H	EBS, Wabco
J1M	Dig. tachograph, 2nd gen., version 2, ADR	Z2G	EAPU equipment, item 4
J1S	Tachograph manufacturer VDO	Z3A	Switch module 1, type A
J2H	Multimedia Radio Touch	Z3D	Switch module 2, type B
J2I	Standard loudspeaker	Z3F	Switch module 7
J6A	Classic Cockpit	Z3H	Side marker lights, 1st pair
J6W	Reversing camera, towing vehicle end	Z3J	Side marker lights, 3rd pair
J7A	Truck Data Center 8	Z4B	Domestic (Germany)
J7V	Driving assistance map, Europe region	Z4P	Tank cross-section, wide
J8U	Pre-installation for Truck Data Center 8	Z4R	Tank cross-section, high
J9A	Pre-installation for CB radio, 12 V, DIN slot	Z5D	OM 470
J9D	Provision for fitting toll tracking	Z5G	Fan position, on crankshaft
K0T	Main tank, left	Z5I	Fan ratio, 1:1.0
K1T	Tank, 320 l, left, 735 x 700 x 750 mm, aluminium	Z5P	Clutch supplier F&S
K3T	AdBlue tank, 25 l	Z5V	Starter with M10, HDEP
K5M	Tanks, lockable	Z5X	Left-hand drive
K5S	Protective cap for AdBlue metering system	Z5Y	Vehicle, for right-side traffic
K7R	Exhaust pipe, straight, above second axle	Z8P	CTT vehicle, conversion on assembly line
K8D	Exhaust sys., tailpipe to right/outwards, horizontal	Z8R	CTT vehicle, conversion, at the Wörth site
L0A	Illumination regulation, in acc. with UN-R 48.06	Z8T	Main contractor, company-owned branch
L1C	LED daytime running lamps	Z8U	CTT vehicle
L1W	LED turn signals in light signature	Z9A	Constructability request order, special control

SP-REQ. no.	Description
W/JCRT	Omission of 1st body mounting after cab
Z/AJBWI	Offer: Air reservoir relocated between 1st and 2nd front axle, space for supports
Z/A24217K128	
Z/JBWZ	Adaptation arrangement for air tanks
Z/JCFD	Battery carrier relocated to dimension 3475 mm



TRUCK MIXER CONCRETE PUMP 32X-4Z-9



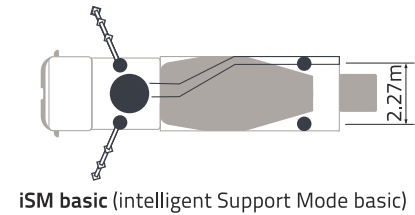
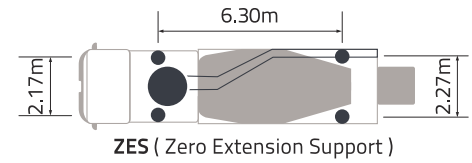
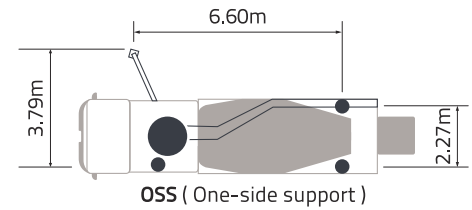
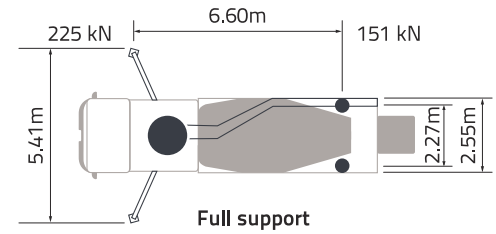
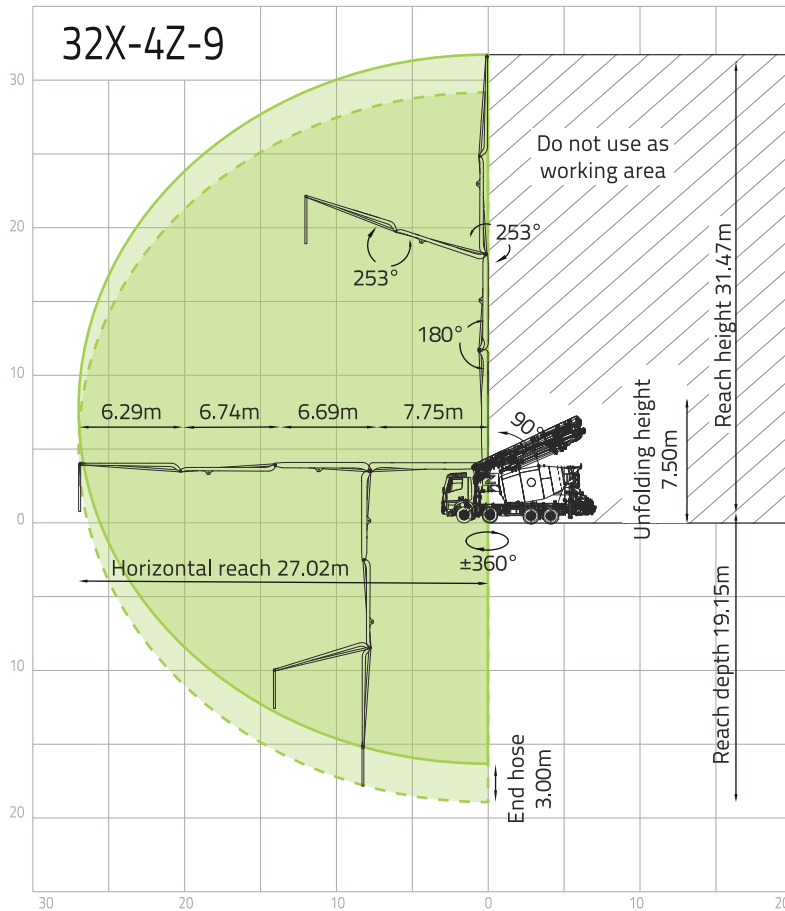
Note: Standard version. Dimensions and weights depend on truck, pump model and equipment.
Dimensions in mm. Example based on Mercedes-Benz Arocs 5 4143 8x4.
For illustration only. Actual products may vary.

Technical Specifications

BOOM	UNIT	
Reach height	m	31.47
Horizontal reach	m	27.02
Reach depth	m	19.15
Unfolding height	m	7.5
Sections	/	4
Folding system	/	Z
End hose length	m	3
Delivery line	mm	DN100
PUMP		
Max. output	m ³ /h	82
Max. pressure	bar	85
Hopper capacity	L	350
Delivery cylinder	mm	200
Stroke	mm	1000
Truck mixer		
Nominal capacity	m ³	9
Drum geometric volume	m ³	15.05
Max. drum speed	rpm	14
Others		
Water tank	L	600

*All data are maximum theoretical values.

Reach information diagram, support



Configurations (Optional★)

Pumping System

- APC (Accurate Pumping Control)
- CPC (Condition-adaptive Pumping Control)
- ECO (Eco. Pumping)
- S-valve swinging speed control
- Synchronized dual-concrete piston retraction
- Chrome-plated concrete cylinder
- Wear-resistant S pipe
- Carbide wear plate

Placing Boom

- ABC (Active Boom Control)
- ARC (Active Boom Rotation Control)
- iMMC (intelligent Multi-arm Motion Control)
- OBF (One-joystick Boom Fold/Unfold)★
- OBP (One-joystick Boom Place)★

Mixing System

- In-cab mixing control
- Rear panel mixing control
- Radio remote mixing control
- Automatic forward/reverse agitator rotation
- Extension chutes *2
- Main chute adjusted by electro-hydraulic power
- Discharge hopper (screwable)
- Discharging and pumping collaboration★
- Steel hinged extension chute★

Hopper

- Cleaning ball stopper

- Bar-type grille
- Hopper vibrator
- Double door hopper cover, aluminium alloy
- Hopper maintenance step

Delivery Line

- End hose, 3m, DN 100
- Snap pipe coupling
- Single-layer straight pipe (DN100)
- Double-layer bent pipe (DN100)

Lighting

- Hopper light, LED
- Rear hopper light, LED
- Support area spotlight, LED
- Mixing discharge light, LED
- Support indicator light, LED
- Tipping warning light, LED
- Mixing warning light, LED
- Side-marker lamp, LED
- Boom tip light, LED★
- Boom light, LED★
- Baseframe access light, LED★

Safety

- Outrigger Position Auto-Verify
- End hose squeeze valve, operable by remote control
- Reversing camera system
- 360° surround camera system

- Mudguard, aluminium alloy
- Rear Protection
- Side Protection
- EPC (Emergency Pumping Control)
- Empty and overflow pumping protection★
- OGS (Outriggers Guidance System)★

Cleaning

- Water tank, 600L
- Water pump, 70L/min, 15bar
- Hose reel for low pressure water pump, 10m
- Quick-connect water inlet
- Automatic cleaning and mixing

Operation and Maintenance

- Radio remote control
- Remote engine off
- Remote engine start
- OTA (Over-the-Air Update)
- Self-diagnosis and monitoring
- Spacious platform for storage
- Sliding ladder
- Pneumatic lubrication
- Central grease lubrication system (pumping)
- Central grease lubrication system (boom)
- Central grease lubrication system (mixing drum, etc.)★

Digital Management

- ZOOMLINK APP

ZOOMLION Heavy Industry Science & Technology Co.,Ltd.

Add: No.677, Lugu Road, Zoomlion Industry Park, Changsha, Hunan, China, 410205

Copyright © ZOOMLION 2024. All rights reserved. No part of the materials provided may be reproduced or copied in any form, or used for any purpose without prior permission from ZOOMLION.

en.zoomlion.com

